



A MONTHLY PUBLICATION  
OF THE MAPLE GROVE  
UNITED METHODIST CHURCH

# JANUARY 2009



## Maple Grove's Annual Family Ski Trip is headed to Maryland.



Calling all skiers, boarders, and anyone who would like to try!!! The Family Ski Trip this year is to Wisp Ski Resort in Western Maryland, February 20-22. We will be staying at the Comfort Inn in Mc Henry, Maryland. Rates are \$117 to \$126/night depending on room chosen, breakfast included, and lift tickets are \$118 for the weekend for adults, \$78 for children 6-12, and kids under 6 get a free lift ticket with adult purchase. For additional information on ski rental rates and lessons, go to [www.wispresort.com](http://www.wispresort.com). To reserve your room at the Comfort Inn call (301) 387-4200, ask for rate code S3A and that Jonathan approved it. If you have any questions, contact David Rutter at 397-4680 or at [dkrutter@sbcglobal.net](mailto:dkrutter@sbcglobal.net). We are also planning a day trip to Mad River Mountain in Bellefontaine, OH sometime in January for those who would like to try skiing but may not be ready for a big trip. More information to follow soon.

## Chocolate Chat

The UMW Hannah Circle will host a chocolate chat in the Fellowship Hall on January 28 at 7 p.m.



COME TO COMPETE...  
OR JUST TO EAT!  
Saturday, January 31, 2009  
5:00 to 7:00 p.m.  
Fellowship Hall

Chili judgment from a panel of preachers.

Cost: \$5.00

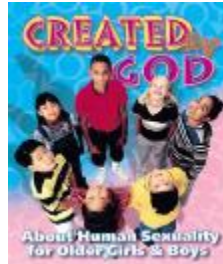
Proceeds benefit CRC

Want more details? Contact Miriam, at [allthedish@hotmail.com](mailto:allthedish@hotmail.com)

## Created By God

A study of Human Sexuality will be held at Maple Grove on Feb. 6 from 5:30 to 8:45 p.m. and Feb. 7 from 9:30 a.m. to 7:30 p.m. for Fifth and Sixth Graders and their parents.

The fee is \$35 per student with a maximum of \$50 per family. This fee covers the book, meals, supplies, and leadership. Childcare will be provided for sessions parents are required to attend.

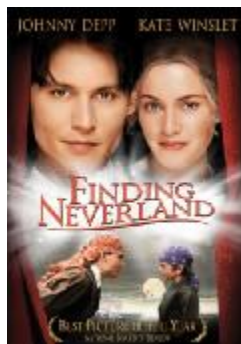


Please complete a registration form and return it with the registration fee, no later than January 18. Registration forms are online at [www.maplegroveumc.org](http://www.maplegroveumc.org).

This event is open to all who are interested in a church-based study of sexuality; friends, neighbors, other family members, or persons from the community. If you have any questions, contact Brenda Buchy at 262-1163 or [bbuchy@maplegroveumc.org](mailto:bbuchy@maplegroveumc.org).

## Friday Night Flicks

This month's feature will be "Finding Neverland." Join us for pizza, a movie, and some stimulating discussion on Friday, January 16 at 7:00 p.m.



# January

## Worship Schedule

January 4, 2009

*Arise, Shine*

Isaiah 60:1-6

Rev. Jeff Allen

January 11, 2009

*You Are Beloved*

Mark 1:4-11

Rev. Bill Croy

January 18, 2009

*What's It Going To Take?*

John 1:43-51

Rev. Bill Croy

January 25, 2009

*Fish Stories*

Mark 1:14-20

Rev. Bill Croy

## Adult Studies Starting in January

- Christianity's Family Tree An eight-week study of different denominations on Tuesday nights at 7, starting Jan. 6, led by Pastor Jeff.
- Discover Your Path A six-week course on discerning the direction to use your gifts and call on Tuesday nights at 7, starting Jan. 13, led by Cathy Davis and Sherri Scholl.
- Introduction to the Bible A six-week class on some basics of the Bible on Sunday mornings at 9:45, starting Jan. 11, led by Pastor Bill.
- Parenting with a Purpose A six-week parenting course on Sunday mornings at 9:45, starting Jan. 11, led by Duane Casares.
- Summer of Christian Life A seven-week course discussing issues faced by mid-life adults. Sunday mornings at 9:45, starting Jan. 4, led by Jon Bennett.

## Maple Grove Players thoughtful theatre.



### imagine

one day the world will be as one  
*A dramatic reading for*  
*Human Relations Sunday*  
**Sunday, January 18, 2009**  
Both Worship Services

## Mitten Tree Ministry

Help us keep those in need warm this winter. During January we will collect hats, gloves, mittens, and earmuffs for the New Life Clothing Room, Free Store, and CRC. Items are needed for all ages. Drop off your donation in the lobby or you can make a monetary donation.





## Maple Grove Players thoughtful theatre.



### POTLUCK

For Members, Families & Friends!

#### New Members Welcome!

(No acting experience necessary)

Bring your calendar!

Bring suggestions for sketches, songs or full length shows for Dessert Theatre. Updates about our upcoming production of "The Passion", "The Supper That Wasn't" and "Holy Humor Sunday"!

**SUNDAY, FEBRUARY 1, 2009**

12:15 p.m. Fellowship Hall

### My Morning Prayer

What guidance is God giving

For my living of this day?

Will I help someone who's needy?

Will I have kind words to say?

Will outrageous acts of kindness

Be the gifts that I can share?

Let YOUR will, God, be mine today,

Help me to love and care!

—Peggy Ferrell,

*Poems,*

*Prayers and Hymns*



**New Members** will be received on January 25. Orientation sessions will be held on: January 11 at 2:30 p.m. & January 13 at 7 p.m.



Removing of the Greens

January 4 from 2 to 4 p.m.

### Walk to Emmaus and Cum Christo Weekends

Perhaps your New Year's resolution is to dig deeper in your faith. These are excellent ways to find spiritual awakening and renewal.

For more information log onto

[www.gcemmaus.org](http://www.gcemmaus.org) or

[www.cumchristo.org](http://www.cumchristo.org).

Contact Sandi Allen at

[sandiallen@ameritech.net](mailto:sandiallen@ameritech.net) or 447-0528

for details on how to sign up for a weekend.

The dates for 2009 are:

	<u>Emmaus</u>	<u>Cum Christo</u>
Women	Apr 16-19 Oct 15-18	Apr 23-26 Oct 15-18
Men	Feb 19-22 Sep 17-20	Mar 12-15 Sep 17-20

### Wellness Team

Sign-up for Beyond Stress Management: Into Awareness. This 4-week course begins Tuesday, January 13 and will meet in the parlor from 1:30 to 3:00 p.m. This course is designed to help you identify your response to stress and develop an awareness of your thoughts, beliefs and feelings and how they affect your body. You will also learn how to control biological processes through awareness, cope more effectively with stressful situations, and relax deeply in spite of the daily stressors. The cost is \$25 and the instructor, Mary Struble, has 27 years experience as a Biofeedback Trainer and Stress Management Educator.

### Women's Breakfast

Make one of your resolutions to be a part of the Women's Breakfast. We will be in the Parlor at 9 a.m. on Saturday, January 31. Looking forward to seeing you!

### Acolyte Schedule

1/04	Rachelle Hitt
1/11	Chase Maston
1/18	David Maston
1/25	Elizabeth Workman

### Births

Ava Louise Benschneider	11/6/08
James Henry Legates	12/13/08

### Committee Meetings

1/14	7 p.m. Board of Trustees
1/21	7 p.m. Admin Council

### Recent Deaths

*We express our deepest sympathy to the family and friends of...*

...Bonnie Carter who passed away on August 30.

...Helen Barnes who passed away on November 12.

...Howard Andreas who passed away on November 24.

...Larry Rusk who passed away on November 30.

...Carolyn Broilier who passed away on December 10.

...Ectore Tranquillo, II who passed away on December 10, father of Ectore Tranquillo, III.

...Edgar Harrison who passed away on December 11, father of Roger Harrison.

### Recently Hospitalized

Kay Kingzett	Helen Ridenour
Todd Taylor	Pat Johnson

### Thank You

Thank you Sunday Secretary volunteers. Looking forward to 2009.

*Ann Leighty*

Maple Grove's Fourth Annual Cookie Walk turned out to be the best year yet! We sold all the cookies and raised just under \$700 for UMW Missions. Thank you to everyone at Maple Grove for your help with this project...those who baked, ate, bought, sold, iced, set-up and tore down, etc.

*Alison Gill*

